

# WORLDCAMP

## 2025 CHILE

*information*



Every 3 years FIMCAP organises a **World Camp** with participants from 4 continents.

After 9 editions of this project, we celebrate the **10th anniversary** in **Chile**, where the first World Camp took place in 1992.\*

**Jupach Chile** is hosting this event in **January 2025**.

\*together with Ghana

The World Camp is an encounter of youngsters from all over the world. **Participants** are youth leaders **between 20 and 30 years** active in any member organisation of FIMCAP.

While working in **projects in local communities** and living in **host families**, participants will experience the reality of life in Chile, connecting with locals in a unique way.

Participants will also show their cultures to others and get to know the **cultural approaches** of all the participants, focusing on the **cross-cultural concept**.

With the local projects we will have the opportunity to implement the current theme of FIMCAP: **Solidarity**



Join in and discover the  
*beauty of*  
**CHILE**



**#WOCA25**





## Some info about the country

Chile is a democratic republic located in South America. It borders with Peru in the north, Bolivia in the north-east and Argentina in the east.

With more than 4.300km, Chile is the longest country in the world.

Its capital city, Santiago, has more than 5.6 million inhabitants.

## When?

**Arrival travel days:  
6th-7th January  
2025**

**Departure travel  
days: 29th-30th  
January 2025**

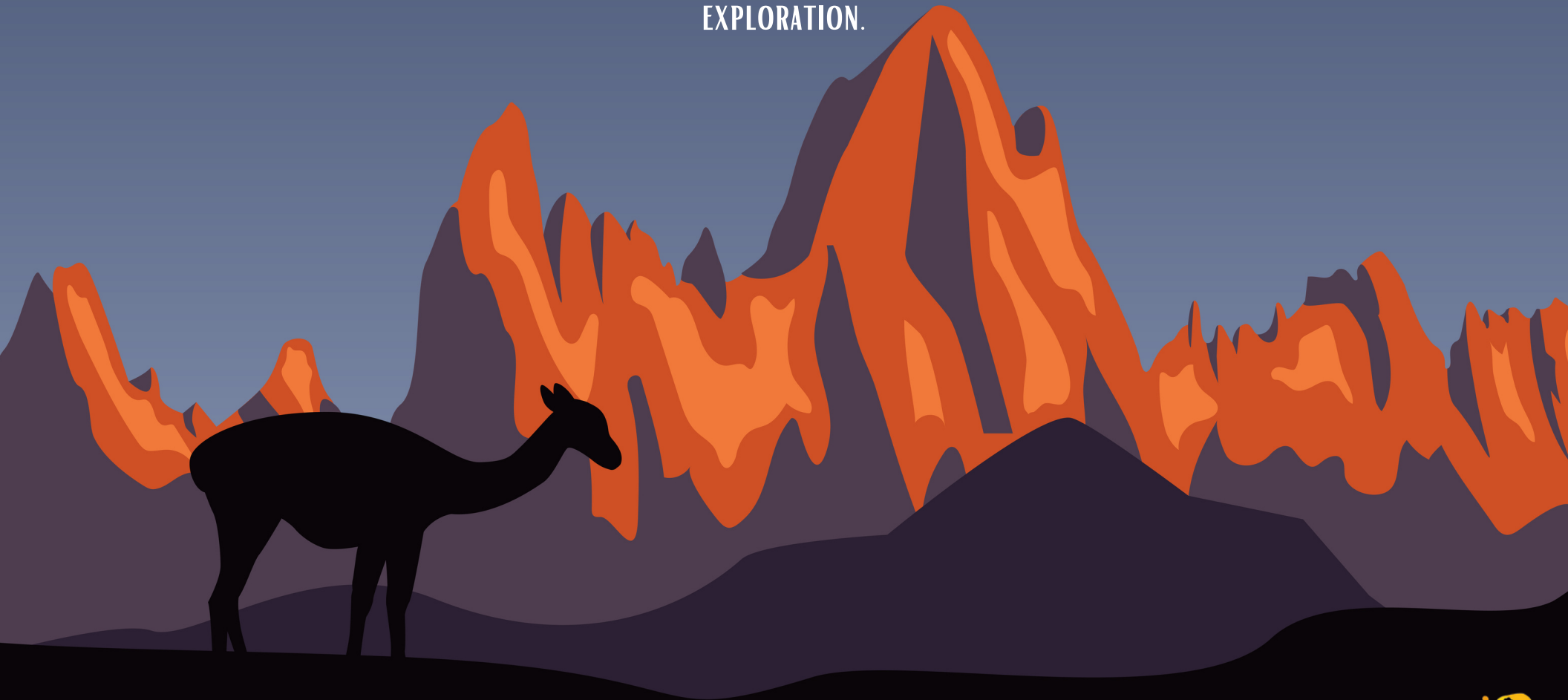
Chile's history is rich and diverse, dating back to indigenous cultures like the Mapuche. Spanish colonization began in the 16th century, leading to conflicts and the establishment of a Spanish colony. Chile gained independence in the early 19th century after a series of battles, notably led by Bernardo O'Higgins and José de San Martín. It has since seen periods of political upheaval, economic growth, and social change.

# Chile



# ANDES

THE ANDES MOUNTAINS, STRETCHING ALONG CHILE'S EASTERN BORDER, HOLD A PROFOUND SIGNIFICANCE IN THE NATION'S HISTORY AND GEOGRAPHY. THEY HAVE SHAPED CHILE'S IDENTITY, PROVIDING NATURAL BARRIERS AND RESOURCES. INDIGENOUS CULTURES THRIVED IN THEIR FOOTHILLS, WHILE SPANISH CONQUISTADORS SOUGHT GOLD AND SILVER WITHIN THEIR PEAKS. TODAY, THE ANDES REMAIN A VITAL PART OF CHILEAN LIFE, OFFERING BREATHTAKING LANDSCAPES AND OPPORTUNITIES FOR ADVENTURE AND EXPLORATION.



# JUPACH

Jupach is a vibrant Catholic youth organization originating from Chile, dedicated to empowering young people in their faith journey. Founded on principles of community, service, and spiritual growth, Jupach fosters a sense of belonging and solidarity among its members. Through various activities, retreats, and outreach programs, Jupach aims to instill values of compassion, integrity, and social responsibility in the hearts of youth across Chile.



In 1965, Father Andrés Materne and Marleen Buekens came from Belgium to Chile, helping to build structures for Catholic youth work.

In 1966, they initiated a youth movement which was named JUPACH (an abbreviation for Chilean Parish Youth). This movement has become a vital force in promoting faith and community engagement among Chilean youth.

In 1974 JUPACH was adopted as a full member of FIMCAP.

# SOLIDARITY

Since its beginning, the World Camp of FIMCAP has been linked with one of the values all the member organisations share: solidarity.

Many local projects have been done in Africa, Asia and Latin America since 1992, and all of them with solidarity as one of the main objectives.

Delegates from all over the world came together to Gernsheim in Germany representing their organisations on August 2023, and they voted to have "Solidarity" as the main theme of FIMCAP for the following 3 years, including this World Camp.



# CHANGE MAKERS

Related to the topic of Solidarity this World Camp has the aim to transform participants into "Change Makers", having active participation in making changes to improve the quality of our society.

Those changes start in local communities as in the projects participants will develop or the local level of youth movements and reach the highest level: international organisations and public entities.

Even the smallest acts can be relevant to change things if they are done with determination.



# LOCAL PROJECTS

The local projects are the tangible outcomes of the World Camp. Those are the field work of this whole activity and they are the main purpose of the participants.

Participants will be divided in different projects spread out in Chile where they will work in smaller groups in a concrete project helping the local community.



# CAMP



You will have the opportunity to join local camps of JUPACH during the World Camp.

This experience will enrich you with an authentic view of how youth work is implemented in Chile.

Despite the language barrier, you will connect with kids and youngsters by playing games and many other activities



## WHO ?

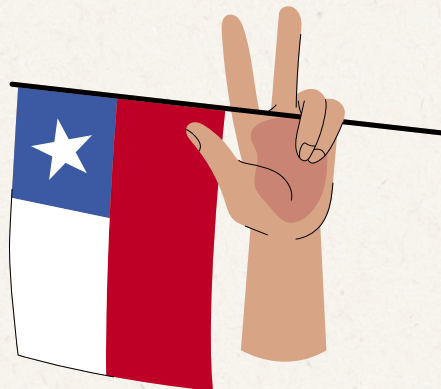
We are looking for experienced leaders between 20 and 30 years old. Participants should have a strong passion for social impact and be **active** at the local, regional, or national level of their organization.

## REQUIREMENTS

- A solid grounding in English is a prerequisite for active participation in the programme.
- Any international experience will be an added value
- Open-mindedness and willingness to work as part of a team



# PARTICIPANTS PROFILE



# 5

spots per  
organisation

## LANGUAGE SKILLS

FIMCAP has 3 official languages: English, Spanish and French. Any knowledge on these languages will be a bonus in the selection process, especially Spanish.



# HOW MUCH DOES IT COST?

## PARTICIPATION FEE

Standard amount **250€**

Solidarity amount I **300€**

Solidarity amount II **350€**

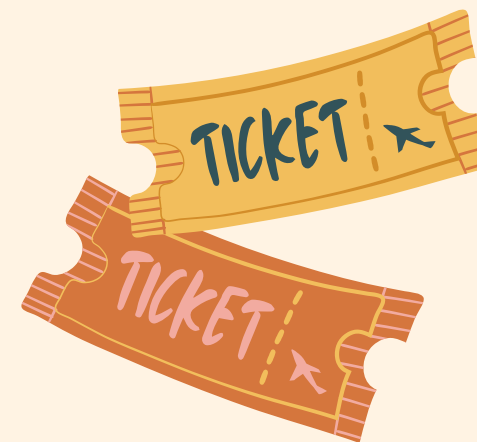
According to the theme of solidarity and taking into account the different realities in the countries, organisations are free to choose which participation fee is the most accurate to take part in this project.

Any amount above the suggestions will be welcome as an extra support for reimbursing more participants!



FIMCAP will reimburse the **travel costs of two participants** per organisation.

There will be a maximum amount of money reimbursed, based on the current price of plane tickets to Santiago de Chile.





# INSCRIPTIONS

If you want to join the World Camp as a participant, please inscribe via the **International Committee** of your member organisation or via the **national board** of your member organisation!



Any



[worldcamp@fimcap.org](mailto:worldcamp@fimcap.org)

Questions?



Fimcap

Contact



@fimcap\_

Us!



@fimcap

